

ENERGY THERAPIES

---

Vibrational Expansion Technique®

Prospectus 2009

ENERGY THERAPIES

# Practitioner Training

---

Energy Therapies  
092392410

[www.energytherapies.co.nz](http://www.energytherapies.co.nz)

[dorothy@energytherapies.co.nz](mailto:dorothy@energytherapies.co.nz)

10 Massey Ave  
Pukekohe

---

# Table of Contents

## **CHAPTER 1**

**Introduction**

**Vibrational Expansion Technique®**

## **CHAPTER 2**

**The Modules**

## **CHAPTER 3**

**Diploma Course**

## **CHAPTER 4**

**The Modules**

## **CHAPTER 5**

**The Fees**

---

## Introduction

**T**his is a 12 module course incorporating Vibrational Expansions and personal growth incentives with each module.

*Vibrational Expansion occurs when one opens to a greater number and/or higher frequency energies. This can be achieved by personal intention, life experience, or can be assisted. The aim of this course is to ensure any person wishing to practice professionally or on an amateur basis can do so with confidence. Whether you want to increase skills for family or personal use to develop yourself or gain a professional acknowledgement this course is aiming to provide a deeper understanding of the practices associated with healing and energy work.*

*When utilizing the Vibrational Expansion Technique® with a client you are effectively encouraging them to embrace expansion themselves, as opposed to supplying a predetermined frequency for their use, by using this method of energy therapy your client will be actually selecting the number and type of frequencies for themselves which in turn virtually guarantees positive results that are very specific, real, and permanent.*

*This is a correctional technique which has long term and ongoing consequences for an individual; the therapy continues long after a client has moved on. They are most likely to experience ongoing lifestyle and emotional changes that enhance their lives on every level.*

*Throughout the course you will be challenged to expand; self development and awareness is part of the experience, only by gaining insight into human nature and the influences that affect you can you help others to enhance their life experience. If you already have trained in Reiki, Seichim or other modalities or are a body centred practitioner, the techniques learned, and the application of energy therapy throughout this course will be unlike anything you have learned to date. The depth of the information is second to none.*

## ENERGY THERAPIES

*There is a strong emphasis on Communication Skills, Practical Application and Solution Based Therapy. Each Module comes with a detailed and well presented manual with CD imagery to assist in ongoing study.*

*Assignments, Case Studies and Hands on training are requirements in this course, all of which are assessed at the end of each module with online support on an ongoing basis eliminating the need to finish any module without a clear understanding .With each module you are given the opportunity to question, practice and offer your understanding of the chakras, the human & animal energy systems along with developing interpretive abilities that will ensure success with your clients, and if studying for personal growth the expanded awareness gives you the opportunity to realize your full potential in any area of your life.*

*It is practice that leads to confidence, feedback from those you help and open discussion with your tutor on a regular basis all assist you in gaining the practical knowledge to ensure your abilities are fully expanded. Distance education gives you the freedom to take your learning in manageable time frames; you can suit this course around your family and career without sacrificing education. The standard time period for this course is 12 months with an allowance of two years for completion, and you can finish earlier if you wish.*

*For Those who live within a reasonable proximity Two hours one Saturday per month, (date of your choosing monthly, per module) is allocated for one on one training, mentoring and assessment, this is inclusive of the course fee, but of course can be done live with web cam, or live chat or by phone for those who live too far away.*

## The Modules

### Module One

12 Chakras	Requirement: 2-4 hours written and practical assignments	Energy Therapy
		The Chakras
		Vibrational Expansion
		Case Studies

This module is focused on the whole, how to conduct a session, recognizing the twelve chakras, how to complete a case study, and a vibrational expansion. There are two meditations included and a fully colour manual

### Module Two

Aura	Requirement: 2-4 hours written and practical assignments	Aura
		Aura Interpretation
		Identifying Issues
		Vibrational Expansion

Meditations to assist in seeing the aura, practice in interpretation and Vibrational expansion, how to identify issues and determine a solution. This part of the course gives a direct approach to working with a client and self diagnosis.

## ENERGY THERAPIES

### Module Three

Colour Therapy	Requirement: 2-4 hours written and practical assignments	Working with Colour
		Chakra's and Colour
		Colour Therapy
		Vibrational Expansion

The complexity of colour in therapy always makes this an intense workshop, aligning the colour frequencies and the chakras, and the environment for specific purpose. Learn about how colour frequency actually works and why it is so important, while gaining insight into the aura and chakras. Includes meditations and Vibrational Expansion

### Module Four

Intuitive Arts	Requirement: 2-4 hours written and practical assignments	Related Intuitive Practices
		Clairvoyance/the Cards
		Interpreting Information
		Vibrational Expansion

Learn to use the tools of the trade, effectively, quickly and with confidence. Again we address interpretation as this would be the weak area for most. A look at cards, pendulums, crystals etc. A day of readings and interesting discoveries about your own intuitive abilities. These abilities will be integrated into your energy therapy techniques.

## ENERGY THERAPIES

### Module Five

Symbols & Absent Healing	Requirement:  2-4 hours written and practical assignments	Healing Symbols
		Healing the past
		Absent Healing
		Vibrational Expansion

The implications for personal growth in this module are obvious, use of symbols as a short hand for a frequency of energy for a specific purpose have been used for thousands of years and are very effective especially when learning. Regression and how to perform them are on the agenda in this module

### Module Six

Meditation	Requirement:  2-4 hours written and practical assignments	Meditation/Hypnotherapy
		Addictions and energy therapy
		Anxiety and other issues
		Working with Anger

This is a very intense module where we focus on **T'nT** (Transformational Therapy) This works and gives your client the opportunity for quick results, if you smoke then look out, techniques that slide under the barriers that are the natural defense mechanisms for those with addictive

**Module Seven**

Physiology & the Aura	Requirement: 2-4 hours written and practical assignments	Advanced Aura Diagnosis
		Physiology & the Aura
		Body Mapping
		Extended Diagnosis

We up the tempo here, by now you will have a full understanding of the energy system and basic energy therapy techniques, here we start to integrate the knowledge with reality and application in a clinic situation. The work load goes up here also, you need these hours to gain a full understanding as we go, it makes all the difference.

**Module Eight**

The Body	Requirement: 2-4 hours written and practical assignments	The Body & the Chakra's
		Cellular Regeneration
		Pain & the Brain
		Mind Body Connections

In this module we explore the psychology of pain, pain management and how the body interacts with the chakras to create physical problems, and how the chakras can be used to radically change the behaviour of the cells. This is Thought Field Therapy Technique beneficial for those with chronic illness.

**Module Nine**

Advanced Chakras	Requirement: 2-4 hours written and practical assignments	Advanced Chakra Diagnosis
		Dissecting a Chakra
		Interpretation
		Comprehension

We go inside the chakra to gain an understanding of the internal workings and aspects that are generally not included in a chakra balancing, this is a whole new world that will reveal the parts that make up the whole and how this affects a reading of chakras, most readings of a chakra are superficial at best, things get very complex here. I utilize every piece of technology at my disposal to ensure a complete understanding on your part.

**Module 10**

Dominant Chakras	Requirement: 2-4 hours written and practical assignments	Advanced Chakra Diagnosis
		Dominant Chakras
		Converting A Chakra
		Realigning Chakra's

The development of the chakras place a huge part in the end result for an adult, this is a radical therapy that is an almost instant solution to long term problems, at this point you will be able to recognize, diagnose, and find a solution for problems without effort.

**Module Eleven**

Clients, Your Business & success	Requirement: 2-4 hours written and practical assignments	Working With Clients
		Art of Delivery
		Conducting a Reading
		Vibrational Expansion

An emphasis on communication skills and an introduction to life support strategies for continued success when a client (or you) has embarked on a life changing program. Real client's hands on therapy and diagnosis. Discussion and prep for exam.

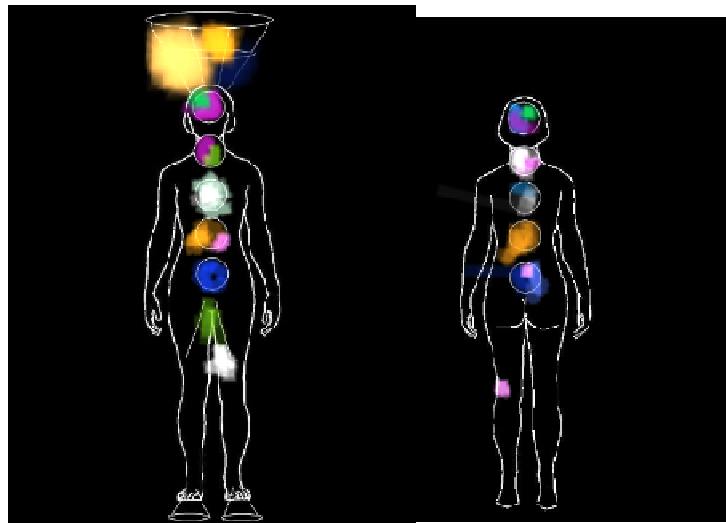
**Module 12**

Exam	Pre Exam Run through
	Exam part 1
	<b>Written exam</b>
	Exam part 2
	<b>Practitioner Assessment</b>
Yahoo you've done it!!!	

## Presentation of Modules

- Each module has a complete manual including a CD for full colour accurate imagery of chakras and the aura. You can complete assignments on computer or by hand.
- Each Assignment is a question and answer format using information from the relevant module and manual.
- Each assignment is marked and gives us both the opportunity to see how you are going and your level of comprehension at any stage to ensure your success in the exam at the end of the course.
- You earn your certificate so it is something to be proud of and a valid expression of what I believe to be one of the most comprehensive Energy Therapy training programs available today.
- Each Assignment requires hands on Therapy, a client summary is filled out each time you conduct a session, these are graded, also a practitioner assessment is filled out by your clients, it is good practice for you to keep a record of clients, if you wish to be a professional it is a habit you will be glad of in the future.

•



- Figure 1; a look at the type of imagery available for chakra diagnosis in the earlier stage of the course.

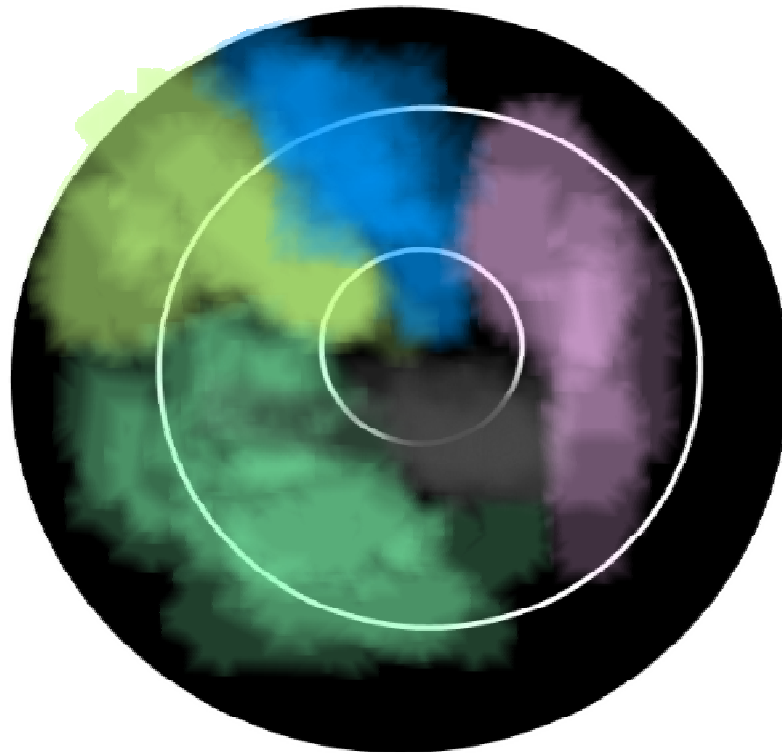


FIGURE 2; A SOLAR PLEXUS CHAKRA IN DEPTH

**The type of imagery you can expect**, these pictures will come on CD for colour accuracy and of course sizing will be up to you. Your assignment will be looking for an interpretation this is an advanced feature of the course.

**Application Form**

Vibrational Expansion Technique® 2009

Name.....

Address.....

Phone.....

Email.....

Birth Date        /        /

Orientation material available with a course deposit if required Yes No  
Orientation Material, delivered via email. To give you an introduction to the basics  
prior to starting the course

Payment Details

Single Payment: \$1500

3 payments of \$500

Chq Encl.

Check out the discounted price for full course practitioner and diploma at end of document

## **Vibrational Expansion Technique®**

### **Diploma in Energy Therapy**

*This is a 6 week course covering advanced techniques in energy therapy, open only to those who hold a Practitioners Certificate in the Vibrational Expansion Technique®. The course is held fortnightly on Sundays from 9-2. Each Class is broken into two sections, in the morning Theory, and in the afternoon, hands on energy therapy using the techniques learned.*

*This is an opportunity to focus on specific areas of health and well being incorporation the separate systems within the human body, with a strong emphasis on chronic disorders, creating a management plan for health and well being, nutrition for the soul and body, applying energy through specific points to target organs, sports therapies, and accurate diagnosis.*

*Client management, Ethics and Communication are an ever important part of these courses. Each class will spend time exploring the mind and its potential, both to heal and create barriers to healing. Learn to recognize behaviours and deal with them appropriately.*

*This is a comprehensive course that will leave the student confident in his/her abilities and understanding of the more complex aspects of Energy Therapy. The course is followed by an exam,(this will require some study), the successful student receiving a Diploma in Energy Therapy.*

## The Modules

Although it is important to include the whole body in any energy therapy session, it is often just as important to focus on a particular area creating difficulties that can range through the entire physical system. Each of the body's systems has a specific role and you will discover the role the mind plays in the well being of each area, learn how to encourage an holistic response while expansion is achieved by your client with the potential to bring about the optimum result.

### Module one

Circulatory system	Attitude and health	Body; Circulatory System
		Mind; Attitude to life
		Applied Energy Therapy
		In Practice

**Module two**

Nervous system	Fears phobias	The Body; The Nervous System
		The Mind; Fears and Phobias
		Applied Energy Therapy
		In Practice

**Module Three**

Respiratory system	Emotions and the body	The Body: The Respiratory System
		The Mind: Emotions
		Applied Energy Therapy
		In Practice

**Module Four**

Muscles	Belief and action	The Body: Muscle Groups
		The Mind: Belief ,Ability, Action
		Applied Energy Therapy
		In Practice

**Module Five**

Skeletal structure	Strength and commitment	The Body; Skeletal Structure
		The Mind; Strength and commitment
		Applied Energy Therapy
		In Practice

Module Six

The brain	Thought manifestation	The Body; The Brain
		The Mind; Thought
		Applied Energy Therapy
		In Practice

**Application Form**

Vibrational Expansion Technique® Diploma in Energy Therapy 2009

Name.....

Address.....

Phone.....

Email.....

Birth Date     /     /

Payment Details

Single Payment:    \$900   

2 payments of     \$450   

Chq Encl.

Single modules are \$150

although I am open to working in specific areas there is no certification without the full course

**FULL COURSE**

PRACTITIONER & DIPLOMA INCLUSIVE    \$2000

## Fees

### *Vibrational Expansion Technique® Practitioner Training*

12 modules

Prepay the course = \$1500

### *Diploma in Energy Therapy*

6 modules

Prepay Course \$900

As this is a diploma course there are no casual rates

Payment Methods; Direct credit, Internet banking, Credit card online, or Cheque.

